

MAGNUM LOCK-TRAD MG-T

Gotoh is pleased to announce a new thumbscrew-style locking tuner. Much requested and long awaited, the "Magnum Lock - Trad" combines classic functionality with Gotoh technology.



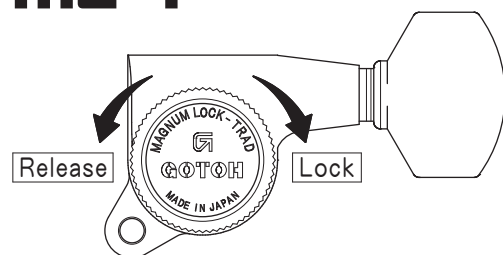
Traditional Style Locking Tuner

GOTOH®

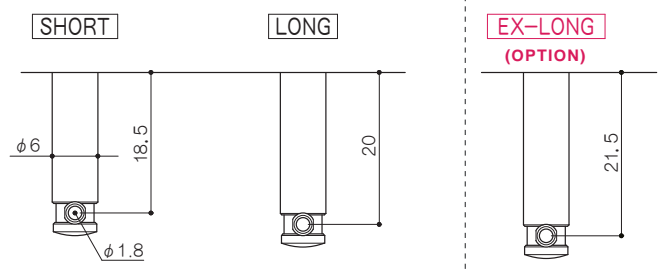
Traditional Style Locking Tuner

MG-T MAGNUM LOCK-TRAD

MG-T



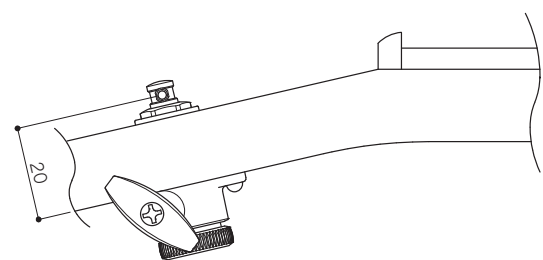
MG-T Post Dimensions



- * In case of L3+R3 : LONG×3、LONG×3 Fig1
- * In case of L6 or R6 : SHORT×3、LONG×3 Fig2
- * As the example of an option : SHORT×3、LONG×2、EX-LONG×1 Fig3

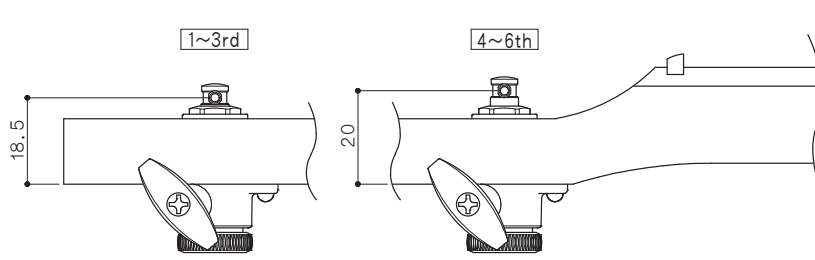
Standard set 3/3

Fig1



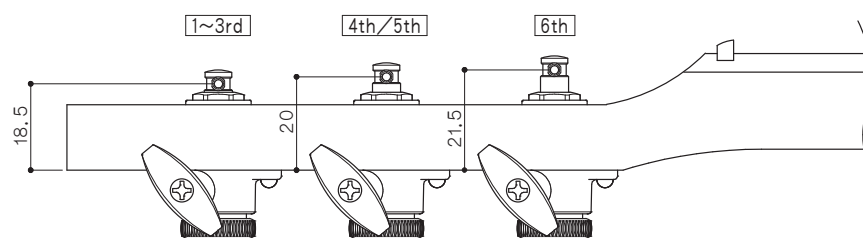
Standard set 6-In-Line

Fig2



Example of an option set 6-In-Line

Fig3



Magnum Lock-Trad string posts are available in three lengths that can be purchased in any combination to create staggered posts. Please make your choice when ordering.

www.g-gotoh.com

GOTOH®

3040 Miyako-cho, Isesaki, Gunma, 372-0801 Japan TEL 0270-25-3608 FAX 0270-23-8432

Specifications subject to change for further quality improvement without notice.

GOTOH® GUITAR HARDWARE and MACHINE HEADS are sold and serviced by



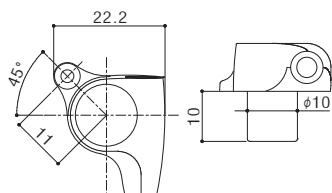


Traditional Style Locking Tuner Magnum Lock-Trad

SGS510 MG-T SGS510Z MG-T

Head Type	
Finishes	C. GG. B. CK. XN. XC. XG
Gear ratio	SGS510 MG-T 1 : 15 SGS510Z MG-T 1 : 18

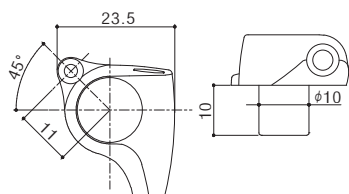
* Please refer to SG510 series of our website or a general catalogue for Color option and Button option.



SGL510 MG-T SGL510Z MG-T

Head Type	
Finishes	C. GG. B. CK. XN. XC. XG
Gear ratio	SGL510 MG-T 1 : 18 SGL510Z MG-T 1 : 21

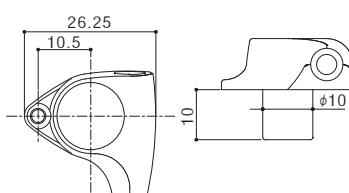
* Please refer to SG510 series of our website or a general catalogue for Color option and Button option.



SGV510 MG-T SGV510Z MG-T

Head Type	
Finishes	C. GG. B. CK. XN. XC. XG
Gear ratio	SGV510 MG-T 1 : 18 SGV510Z MG-T 1 : 21

* Please refer to SG510 series of our website or a general catalogue for Color option and Button option.

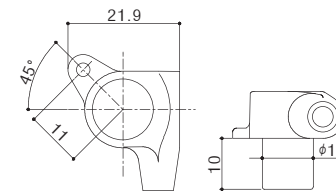


Finishes : C (Chrome), GG (Gold), B (Black Chrome), CK (Cosmo Black), XN (X-Nickel), XC (X-Chrome), XG (X-Gold)

SG503 MG-T

Head Type	
Finishes	C. GG. B. CK
Gear ratio	1 : 15

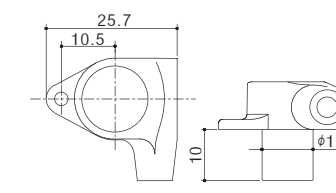
* Please refer to SG series of our website or a general catalogue for Color option and Button option.



SG301 MG-T

Head Type	
Finishes	C. GG. B. CK
Gear ratio	1 : 18

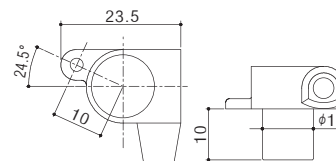
* Please refer to SG series of our website or a general catalogue for Color option and Button option.



SG360 MG-T

Head Type	
Finishes	C. GG. B. CK
Gear ratio	1 : 14

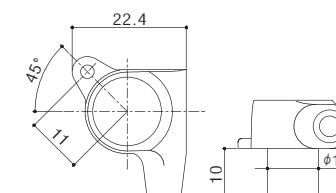
* Please refer to SG series of our website or a general catalogue for Color option and Button option.



SG381 MG-T

Head Type	
Finishes	C. GG. B. CK
Gear ratio	1 : 16

* Please refer to SG series of our website or a general catalogue for Color option and Button option.



Finishes : C (Chrome), GG (Gold), B (Black Chrome), CK (Cosmo Black)